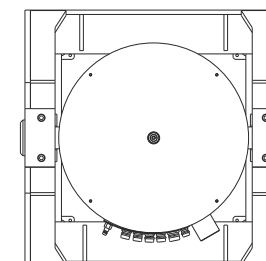
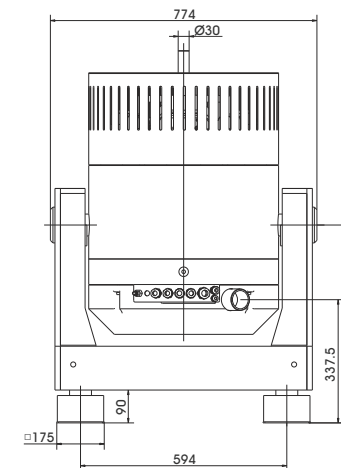
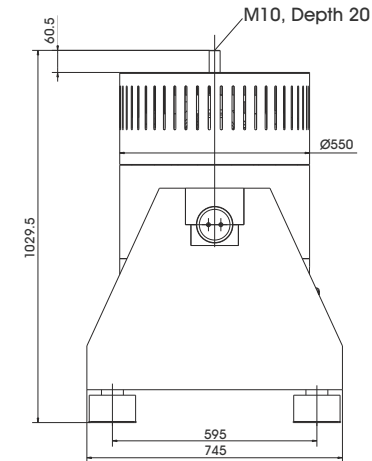


TECHNICAL PARAMETERS Modal exciter S 56263-M/LSS

| | |
|--|---|
| Rated peak force Sine _{pk} /Random _{RMS} | 6300/4300 N |
| Frequency range | 5-2000 Hz |
| Main resonance frequency(free-swinging) | >2500 Hz |
| Max. displacement Peak-Peak ¹ | 100 mm |
| Max. velocity Sine/Random | 2.0/2.0 m/s |
| Suspension stiffness | electronically adjustable |
| Effective moving mass | 12.0 kg |
| Weight | 850 kg |
| Magn. stray field Std./low degaussing | <1.5/<0.8 mT |
| Coupling thread | M10 |
| Interlocks | Temperature, displacement, cooling air, overcurrent |

1) only with foundation mounting



SCOPE OF DELIVERY, OPTIONS AND FEATURES OF THE SYSTEM

| | | |
|--|---|---|
| <p>Scope of delivery:</p> <ul style="list-style-type: none"> Modal exciter 6.3 kN Swivel frame Power amplifier 22.5 kVA Cooling blower Connection cables (each 5 m) Power cables (5 m) for amplifier (CEE 32 connector) Blower hose ø100 mm (5 m) | <p>Options:</p> <ul style="list-style-type: none"> Low degaussing kit to further reduce stray magnetic field Wheels&Rails (incl. 3m rails) Squeak&Rattle (Silent operation without blower) Remote control (Software) Silencer for cooling blower (Noise reduction 3 - 6 dB(A)) Acoustic enclosure for cooling blower (Noise reduction 5 - 23 dB(A)) Cable extension Factory acceptance test | <p>Features:</p> <ul style="list-style-type: none"> Vibration isolation < 6 Hz Coarse filter unit Fully automatic electronic load compensation Electronic zero point regulation with adjustable stiffness Automatic centering of the armature Degauss kit to reduce stray magnetic field Integrated mains switch and line filter Integrated field power supply Noise-button Input voltage analyzer Voltage clipping limiter to avoid clipping 3 Sigma Peak current Made in Germany Servicehotline |
|--|---|---|

TECHNICAL PARAMETERS Amplifier A 1 02 3 023 T

| | |
|--|--|
| Output power _{RMS} | 22500 VA |
| Frequency range | DC - 4 kHz |
| Voltage _{RMS} , max. | 150 V |
| Current _{RMS} , max. | 150 A |
| Load resistance, opt. | 1 Ohm |
| Signal input voltage _{RMS} (switchable) | 2.5/5/10 V |
| Distortion | < 0.7 % |
| Signal to noise ratio | > 90 dB |
| Field voltage, max. | 280 V |
| Field current, max. | 6 A |
| Weight | 330 kg |
| Dimensions (WxHxD) | 600 x 1800 x 800 mm |
| Power supply (Standard) | 3~ / N / PE 400 V±5% 50 Hz, CEE 32 |
| Recommended fuse protection (Standard) | 32 A slow |
| Max. power consumption at 400 V (incl. blower) | 14.6 kVA |
| Interlocks: | Overload, temperature, clipping and more |
| Features: | |
| High Signal to noise ratio of >90 dB | Noise-button |
| Field supply integrated | Input voltage analyzer |
| Mains switch and integrated line filter | Voltage clipping limiter to avoid clipping |
| ESD-monitoring (Protection of the system against damage) | 3 Sigma peak current |
| Field voltage/Field current variable according to customer spec. | Electronic zero-point-regulation (TMC) |

TECHNICAL PARAMETERS Cooling blower TB 9

| | |
|---|--------------------|
| Volume flow rate | max. 870 m³/h |
| Total pressure difference | max. 22 kPa |
| Power | 7 kW |
| Frequency | 50 Hz |
| Hose diameter | 100 mm |
| Hose length (Std.) | 5 m |
| Weight | 104 kg |
| Dimensions (WxHxD) | 560 x 605 x 695 mm |
| Sound pressure level, max. | max. 86 dB(A) |
| Power supply (standard) | by amplifier rack |
| Max. power consumption at 400 V | 10 kVA |
| Options: | |
| Silencer TB 9-SI (Noise reduction 3 - 6 dB(A)) | |
| Dimensions (LxD): 1012 x 150 mm | |
| Weight: 1.2 kg | |
| Acoustic enclosure TB 9-AE (Noise reduction 5 - 23 dB(A)) | |
| Dimensions (WxHxD): 1094 x 1086 x 1000 mm | |
| Weight: 134 kg | |
| Hose length according to customers request (up to 10 m) | |



Cooling blower TB 9



Silencer TB 9-SI (optional)



Acoustic enclosure TB 9-AE (optional)