

# Portable Instrument Stand

p/n: SP62-801

## Product Features:

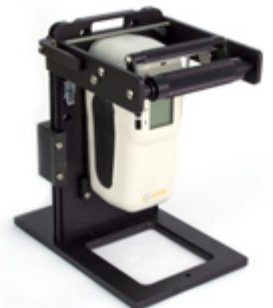
- Simplified, expandable accessory approach
  - No tools for installing or removing instrument (approx. 30 seconds)
  - Single design, compatible with the SP Series and 962/964 instruments
  - Vertical or horizontal sample plane orientation (dead bug)
  - Removable dampened sample arm
  - Adjustable sample support shelf
  - Can be secured to bench or desk top
  - Open sample preview capability
- Replaces DRS-80 Benchtop Stand for SP Series and 962/964
- Availability: Released/available

## Dimensions:

W 7 1/4" (18.42 cm), L 10" (25.4 cm),  
H 10 3/4" (27.31 cm)



p/n: SP62-801 with SP62



## X-Rite: Your source for accurate color. On time. Every time.

X-Rite is a world leader in providing global color control solutions for manufacturing and quality management requirements. We lead the industry in offering service options to ensure uninterrupted performance of all X-Rite products. Training and educational resources are available globally and online for both new and experienced users to optimize their color measurement capabilities.

Visit [xrite.com](http://xrite.com) for more information about X-Rite products. X-Rite customers worldwide may also call the Applications Support team at [CASupport@xrite.com](mailto:CASupport@xrite.com) or Customer Service at 800-248-9748.

[XRITE.COM](http://XRITE.COM) | [PANTONE.COM](http://PANTONE.COM)

© 2011, X-Rite, Incorporated. All rights reserved.

PANTONE® and other Pantone LLC. trademarks are the property of Pantone LLC.

L10-434 (01/11)



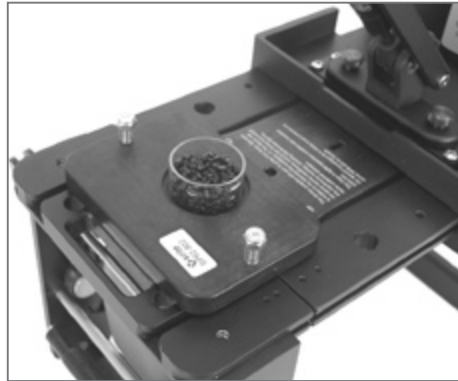
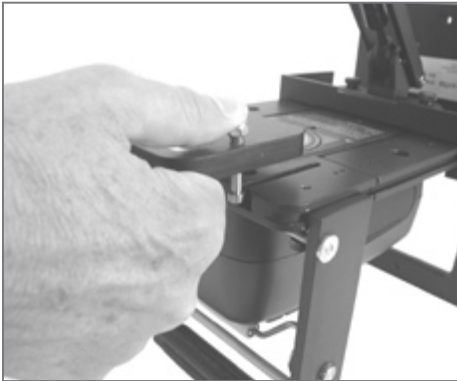
# Portable Instrument Stand Sample Holders

p/n: SP62-802 Powder Cell Holder

p/n: SP62-803 Liquid Cell Holder

## Product Features:

- Sample holders compatible with the new SP stand (SP62-801).
- DRS-811 (powder cell holder) and DRS-810 (liquid cell holder) are incompatible with SP62-801.
- The powder cell holder is designed to aid in liquid or powder measurement. The fixture works with the SP or 962/964 handheld spectrophotometers, and needs the Portable Instrument Stand (P/N SP62-801) for proper measurement.
- The liquid cell holder is designed to aid in liquid measurement. The holder features a black chamber with a white ceramic backing that encloses the liquid-filled cell. A cell lid is provided to prevent spilling. The Liquid Cell Holder, requires the Portable Instrument Stand (P/N SP62-801) for proper measurement.



*p/n: SP62-802 Powder Cell Holder*



*p/n: SP62-803 Liquid Cell Holder*